

YORK CYCLE RALLY

1945 2015

20-21st June 2015

SHOW PROGRAMME



www.yorkrally.org

£1.00 Free for
Friends of York Rally



THE TANDEM SPECIALISTS...



JD Tandems sell tandems from eight different manufacturers, offering a full range of options for our customers, including different frame materials, sizing, saddle types, handle-bars, brakes and tyres. With such a vast range of options, you can be sure we'll have a tandem to suit you and your partner.

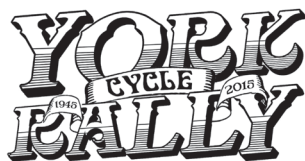
Tel: 01756 748400

www.tandems.co.uk

www.orbittandems.co.uk

JD Tandems LLP,
Asquith Industrial Estate,
Gargrave, North Yorkshire BD23 3SE

Welcome to the York Rally 2015



Contact numbers

York Rally mobile:
0746 732 1443

This number will be manned 24 hours throughout the Rally. For all non-emergency enquiries.

First Aid & Emergency:
0746 732 1440

On-site emergency number, manned 24 hours throughout the Rally.

Email: info@yorkrally.org

Website: www.yorkrally.org

Welcome to the 2015 York Rally, from the *Friends of York Rally* whose support has made the whole thing possible, from the many volunteers helping to stage the event, from the traders and caterers awaiting your visits, from the ride leaders awaiting your participation, from the all-volunteer organising committee and from everyone else who has volunteered their time, money and energy to revive this great event.

And this year's Rally is as much a brand new event as it is a continuation of the heritage which runs back 70 years. We acknowledge with gratitude the tremendous efforts of the previous CTC volunteers who, over many years, built the show into an event so well-loved that it could not be allowed to die.

As we revive the Rally this year, it's with a view to bringing back the best of what the organisers of Rallies past achieved. They made it an invaluable opportunity to meet up with old friends, to go on rides, to share memories and to make new ones with like-minded fellow cyclists.

So following the cancellation in 2013 of the York Cycle Show, as it was then called, a number of cyclists with ties to the Rally slowly came together, leading eventually to our first meeting in June 2014. Present were a mix of complete newcomers to the organising side of the Rally and stalwarts of the event. It was decided that we would revive the Rally as an independent event, not affiliated to any national organisation, and that we would revive the 'York Rally' name.

(continues overleaf)

Contents

- 3 Welcome to the York Rally
- 6 Friday: what's on and rides
- 7 Saturday: what's on and rides
- 9 Sunday: what's on and rides
- 11 Invention Convention, Velodrome ride
- 13 Photo competition
- 15 Club stands and charity displays
- 16 Site map
- 19 List of exhibitors
- 21 Join the *Friends of York Rally*
- 23 York Rally badges and clothing
- 25 The York Rally Sportive 2015
- 27 How the York Rally began
- 30 Local info and useful numbers

Below: Some of the York Rally Committee at a meeting in September 2014. Our meetings are open to all and everyone is welcome! See the website or contact us for details of upcoming meetings.



Welcome (continued)



Above: Just some of the many fine organisations who have offered us their generous assistance with the 2015 Rally.

The Rally returns

We started, then, in summer last year with a bank balance of zero and an urgent need for initial funds. Two measures were proposed: to set up the *Friends of York Rally* supporters club, and to run a sportive ride in September.

The *Friends of York Rally* astonished all of us. Within just a few months membership had passed 100, from across the country, and these generous donations provided vital seed funding. But they provided more than that: the kind messages of support, and the votes of confidence they represented, convinced all of us working to revive the Rally that this was something worth doing, something that mattered to lots of people, something worth fighting for. As we go to print, the *Friends* has close to 250 members.

The Sportive in September saw many *Friends* and other riders head out towards North York Moors and again this boosted our funds. But we knew that there was a mountain to climb.

An austerity Rally

We have it on good authority that in recent years the cost of running the Rally was over £50,000. We were sure we could do it for less: our initial 'bare bones' target was £12,000. As more costs piled up, that was revised upwards to around £18,000 – still not much more than a third of what the Rally was costing before, but a frightening total. Clearly belts would have to be tightened.

And tightened they have been. Until the marquees were booked in early May, nothing left the Rally account except for bank transaction fees and the direct costs of running the Sportive. Everything has been done for free, or as donations by the volunteers involved.

So we meet in a café, Your Bike Shed in York – it's noisy sometimes, but it's free to use and has a lovely cycling atmosphere. The website is hosted by our event organiser's son at no charge, and it uses all free software. And nobody on the committee has claimed personal expenses for anything, although in some cases these would run into hundreds of pounds for fuel or train fares to attend meetings. No claims for stationery, for postage, for travel. Nor, of course, for time, which for some of our volunteer committee members must run into hundreds of hours. Committee members are also paying like anyone else for campsite pitches, clothing, badges, etc.

The austerity measures don't just affect the committee. Volunteers, too, have this year been asked to pay for everything they use. So sadly, this time we haven't been able to offer free pitches or free clothing to our wonderful volunteers. They are doing what they do for the love of the Rally and to help make this event happen once again: please thank them as you enjoy it.

With a following wind, next year we'll be able to be less mean. But this year, until the full costs are met, nobody is getting anything for free.

Rallying call

As I write this, we're encouragingly close to meeting those costs: advance campsite bookings are, say some of our experienced committee members, even ahead of what they recall from some previous years. Trade stands, too, have brought in more money than expected bringing our current total raised to around £15,000. Not bad for a bunch of amateurs starting from scratch.



20 years of the National Cycle Network: Congratulations to Sustrans on two decades of the National Cycle Network, which is maintained largely by volunteers. Route 65 passes right by the Rally site (see map on page 30) and is used by many of our rides.

But we still rely on you to fill the final funding gap. So please, show your support for the event by joining the *Friends of York Rally* at the entrance or in the Rally HQ. It's just £5, or donate more if you wish, but it makes a tremendous difference knowing that we have your support. You can also buy a show programme, clothing, a 2015 Rally badge, or enter our 2015 Sportive – our 'backstop' fund event in case of any shortfall.

We are not just raising funds for this year; we are also pushing hard for next year. Any excess of funds after this year's show will allow us to make next year's bigger and better – in particular we're keen to fund many more children's activities.

We also want to be transparent and open about all aspects of organising the Rally, especially the financial side. Our meetings, including treasurer's reports, are open to all, or just contact us if you have any questions. All are welcome at meetings, especially new volunteers! Some of us are not in the first flush of youth, so new blood is essential to keep the Rally sustained. Please just turn up, or contact us if you'd like to be involved. Date, time and place of our next meeting is always shown on the event website, under 'About us'.

2015 Rally notes

This is already long enough, but before I close I need to mention a few things about this year's Rally.

Fenced-off area: A spanner in the works arose rather late in the day: as you will see a key area of the Knavesmire several football pitches in size has been declared 'out of bounds' by the Council: it was levelled and re-seeded relatively recently and is not yet fully established. We were intending that space to be used for the grasstrack arena; this has now moved down towards the Racecourse stands, with trade show and catering alongside it. We know it's a less than ideal layout – but it's a workable one we hope. Unfortunately there was no getting around this, but we're fairly certain it will be for this year only.

Sunday Service: We did speak to the Minster about the traditional Cyclist's Service, but, the Rally having not happened for a few years, the booking for the service on Sunday morning has lapsed and we won't be able to get it back for some time. The 'Parade' mass ride back was also going to be problematic. We have instead arranged a service at an alternative venue a short cycle ride away, St Matthew's Church in Naburn. The service will start at 9:30 AM, with a ride leaving the Knavesmire at 8.45 AM via the Selby cycle track.

And finally

Another thank-you to everyone, not least to you, the visitors to the Rally, who travel from far and wide to make the event what it is. We hope you enjoy this event, and please do bear with us if it falls short – we're just fellow cyclists, operating on a shoestring, doing our best. We'll certainly learn lessons from this year's Rally, and hope to see you again in 2016 for a even grander weekend of cycling!

Gerry Boswell

Chairman

York Rally Committee

York Rally 2016

The next York Rally will be held on **18th and 19th June 2016**. This is subject to final confirmation: please watch the Rally's website www.yorkrally.org for any updates.

What's on: Friday and Saturday

General Info

RIDES

Unless otherwise stated, all rides are free of charge and you can just turn up to join. Departure points are located along the fencing by the main tarmac road leading into the Rally: see map on page 16. Departure points for each ride, and any changes made since this programme went to press, will be displayed in the Rally HQ (where route details can also be found) and on each of the departure boards. Riders must satisfy themselves that they and their machines are capable of the pace, distance and type of the organised rides. The Rally Committee, organisers and ride leaders can not be held responsible for riders who fail to do so.

SHOWERS

Opening hours: Friday: 4 to 10 pm.
Saturday: 7 to 9:30 am, 2 to 5 pm, 7 to 9 pm.
Sunday: 7 to 9:30 am, 12 to 3 pm, 5 to 6 pm.

CATERING

Opening hours: Friday 6 pm to 11 pm.
Saturday: 7 am to 11 pm
Sunday: 7 am to 4 pm

BAR

Opening hours: Saturday: 10.30 am to 11 pm
Sunday: 10.30 am to 4 pm

AUCTION

The Auction is in the Lounge tent at 3 pm on Saturday, with seller registration from 12:30 am and viewing 2 pm. Please note:

- This is a cash only sale: we have no card facilities and cannot accept cheques.
- Any cycling related item is welcome.
- There is a £2 fee per lot entered, payable by the seller in advance. In addition, 10% sellers and 10% buyer's fees will apply. So if hammer price is £100, buyer pays £110 and seller receives £90.
- All proceeds this year go towards Rally costs. Next year we hope to revert to donating them to a charity.
- Finally, our thanks to the York Lions Club for their kind assistance!

CHILDREN'S DRAWING COMPETITION

We'll have paper and crayons etc. in the Rally HQ for a children's drawing competition - all entries win prizes! Under 7, under 12 and under 16 categories, hand in at Rally HQ by midday Sunday. Prizes awarded 1pm Sunday at HQ.

LOST PROPERTY

Please hand in any items to Rally HQ.

Friday 19th June

4.00 p.m.

CAMPSITE: Campsite opens!

7.30 p.m.

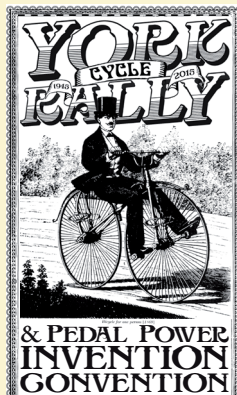
PUB RIDE: Sustrans evening pub ride to Riccall. Leader Peter Huxford, a local volunteer Sustrans Ranger, says "The route is all off-road and there are friendly pubs with a village green. It's about 8 miles each way. Lights needed!"

7.40 p.m.

PUB RIDE: Evening pub ride to the Carlton Tavern, Holgate, York. Short ride to this nearby (less than two miles away) pub, which has apparently offered to provide free food if more than 10 people come! As with all evening rides, you **MUST** be equipped with working lights. Leader is Darren Sables.

11.00 p.m.

CAMPSITE: Quiet please after 11 pm.



What is the Invention Convention?

It's a celebration of DIY cycle engineering and human power. Star guest is 'Daisy', Guy Martin's record-breaking tandem as seen on TV! Check out the 'Paddock' where inventors can demonstrate their creations, and bring your records to play on the pedal jukebox and your mobiles to charge on the cycle generator. Find out more on page 11.

Saturday: Rides

Please note the general information about rides on page 6.

- 8.30 a.m. RIDE:** 'A' Ride: all day ride to Malton (lunch stop), about 50 miles, led by Graham Lawrence.
- 8.40 a.m. RIDE:** 'B' Ride to Shiptonthorpe (for eleveners), 56 miles, led by Sally Raines.
- 8.45 a.m. TANDEM RIDE:** Tandem ride into the Yorkshire Wolds. Pub lunch at Huggate. 54 miles. Led by Dave & Lydia Falkingham.
- 9.00 a.m. RIDE:** 'C' Ride to Knaresborough (for eleveners), 44 miles, led by Gary Knighton.
- 9.00 a.m. AUDAX RIDE:** 100k. £7.50 entry fee. Registration required, available at Rally HQ Friday 6–10 pm. Check in at Rally HQ from 8am. For those who like a challenge and to get a badge for it. Audax UK regulations apply.
- 9.20 a.m. RIDE:** 'E' Ride. Slow/family ride to Riccall (for eleveners), 20 miles, led by Steve Hedges.
- 9.30 a.m. SUSTRANS RIDE:** Tour of York. A short, easy ride for families – this is a York city centre ride with a walking tour of major tourist sites.
- 10.00 a.m. SUSTRANS RIDE:** Super easy family ride to Naburn. This will be guided along the Solar System Greenway as far as Naburn Station but the more energetic can go on alone the full distance to Pluto near Riccall, where the Methodist Church will be open with refreshments from 10 to 1. Includes an explanatory talk from a member of the York University Astropark. All traffic free.
- 11.30 a.m. SUSTRANS RIDE:** This will be on the 'Way of the Roses' going to the National Trust's Beningborough Hall, 9 miles each way – largely off road but with a couple of miles on road. Should be there for lunch.
- 1.30 p.m. RSF RIDE:** To Dunnington (and maybe beyond!): about 20 mainly flat-ish miles using cycle tracks, bridleways and quiet lanes. We will have to cross some main roads. Refreshment stop en-route.
- 6.00 p.m. PUB RIDE:** Bike Week easy pub ride (under five miles each way, almost entirely traffic free) to the Blacksmith Arms, Naburn. You will need lights, and to find your own way back! Maps provided.

Saturday: Activities

- 10.30 a.m.** All activities open:
TRADE SHOW
CLUB DISPLAYS
INVENTION CONVENTION
CHILDREN'S DRAWING COMP.
- 11.00 a.m. CYCLE SPEEDWAY:** Come and Try It event in the arena. Cycles will be provided; helmets required. Organised by Andy Schofield, Kingston Cycles Hull Team and Fred Rothwell, Sowerby Bridge WY.
- 12.00 p.m. GRASSTRACK:** British Cycling National Grass Track meeting starts. Details below.
- 12.30 p.m. AUCTION:** Seller registration open (until 2 pm).
- 2.00 p.m. AUCTION:** Viewing (until 3 pm)
- 3.00 p.m. AUCTION:** Selling starts! Expected to end by 5 pm.
- 6.00 p.m.** All activities close:
TRADE SHOW
CLUB DISPLAYS
DRAWING COMPETITION
- 7.00 p.m. THE FORESTERS:** Live folk music until around 10:30 pm in the main marquee.
- 11.00 p.m. CAMPSITE:** Quiet please after 11 pm.



ROOP SINGH, STORYTELLER:

Be enthralled by Sikh cycling storyteller Roop Singh as he relives his 1000-mile Land's End to John O'Groats ride and more, in the Talks area of the Lounge marquee. See noticeboards for talk times. More at: www.roopsingh.com

GRASSTRACK RACING FROM 12 NOON: British Cycling National Short Distance Grass Track Series, National Endurance Grass Track Series and Open Grass Track Meeting. The Series is being contested at Richmond, Bury St Edmunds, York, Heckington Show, Roundhay Park Leeds, Hertford, Scarborough, Plomesgate and Ipswich. Open to Elite, 1st, 2nd, 3rd and 4th category Adults, Juniors and Female riders. Entry fee on the day: £20. Cheques made payable to York Rally please.



Morpheus



Helios

www.circecycles.com
+44 (0)1954 782020



Commute, tour & explore with our range of folding bicycles



Joey
'All rounder'



Chameleon
'Iconic folding road bike'



Rhino
'Wild thing'

Airnimal

airnimal.eu
+44 (0)1954 782020

What's on: Sunday

Sunday: Rides

Please note the general information about rides on page 6.

8.45 a.m. RIDE TO NABURN CHURCH: An all age worship service with a Father's Day theme will take place at St Matthew's, Naburn, at 9:30 AM. A ride to the church will leave the Knavesmire at 8.45. There will be a marshalled ride back after the service.

10.00 a.m. RSF RIDE: The Solar System from the Sun to Pluto – and back – all in an morning! A gentle easy going ride along York's famous Solar Cycle Path mainly on cycle tracks and a few quiet lanes. Meet at 10am – back for lunch! About 8 miles each way. Refreshment stop en-route.

11.15 a.m. SUSTRANS AND INVENTION CONVENTION VELODROME RIDE: Ride to York's new Sports Village, including a chance to ride on the velodrome for an hour (at a cost of £5 each, to be paid in cash at the velodrome via ride participant Darren Sables) after a one-hour velodrome session run by the British Human Power Club (free for members). Route back is along the Foss Island Greenway via St Nicholas Fields Environment Centre: www.stnicks.org.uk. See page 11 for more!

11.30 a.m. BIKE BELLES RIDE: café cycling ride to Naburn, kindly hosted by York Bike Belles. Start at York Minster, 11AM and picking up riders at the Rally shortly after. Will take about 2 hours. Led by Claire Drury. Delightful ride mainly along flat traffic-free routes and greenways to a cafe in Naburn. All welcome.



Many thanks to the **Yorkshire Cyclo-Cross Association** for staging Round 5 of the **Eleconline Summer Series** at the Rally. Many thanks also Race Organiser Andy Johnson of the **York Cycleworks Racing Team**. Entries are available on the day from the gazebo

near the horse racing course 3 furlong mark (see map, page 16): Adults £10. Juniors (born 1997-98) £7. Under 16 (born 1999 or 2000) £5. Under 14 (born 2001 or later) £3. Entry fee includes chip timing. All races will pass through the arena each lap and finish near the arena Organiser's Office (see detail map, page 17).

Sunday: Activities

10.00 a.m. SADDLEBAG SALE: Sellers setting up. Tables £10, can be booked in advance at HQ.

10.30 a.m. TRADE SHOW: Opens
CLUB DISPLAYS: Open
INVENTION CONVENTION: Opens
CYCLO CROSS: Over 14 year olds, male and female: 45 minute race. See below.

11.00 a.m. SADDLEBAG SALE: Opens to buyers. Entry free with show programme, else £1.

11.30 p.m. CYCLO CROSS: Under 14s: 30 mins race

12.00 noon CYCLO CROSS: Under 8s: 15 mins race (in the Arena)

12.00 noon DRAWING COMPETITION: Entries close, judging starts.

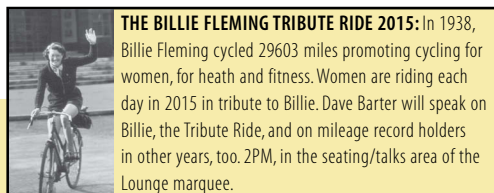
1.00 p.m. GRASSTRACK: Under 16s, Under 14s, Under 10s, Under 8s. On the day entry fee £8. See below for details.

1.00 p.m. DRAWING COMPETITION: Prizes awarded (all entries win prizes!)

2.00 p.m. TALK: The Billie Fleming Tribute Ride 2015. By Dave Barter, in the Lounge tent seating area. See info below.

4.30 p.m. TRADE SHOW: Trade show closes
CLUB DISPLAYS: Close

11.00 p.m. CAMPSITE: Quiet please after 11 pm.



THE BILLIE FLEMING TRIBUTE RIDE 2015: In 1938, Billie Fleming cycled 29603 miles promoting cycling for women, for health and fitness. Women are riding each day in 2015 in tribute to Billie. Dave Barter will speak on Billie, the Tribute Ride, and on mileage record holders in other years, too. 2PM, in the seating/talks area of the Lounge marquee.

GRASSTRACK FROM 1PM: British Cycling Federation Youth Grass Track Racing is held under British Cycling rules & regulations. The competition will be in the form of an omnium, time trial, sprint, distance race and other races to be determined by the number and age of entrants. Races will be divided into two categories: fixed wheel and free wheel. Under no circumstances will fixed and free wheel machines be allowed to start in the same race. Approved safety helmets must be worn in the arena.

The Nice Dutch Bike Co

www.nicedutchbikes.co.uk



**JIM THE
WHEEL BUILDER**

www.jimthewheelbuilder.co.uk jim@jimthewheelbuilder.co.uk

Jim Rawling 07917 076607

HIGH QUALITY HAND-BUILT WHEELS SPECIFIC TO YOUR REQUIREMENTS

WELCOME TO THE YORK INTERNATIONAL PEDAL POWER INVENTION CONVENTION

JOIN US IN THE PADDOCK
TO TRY OUR FABULOUS SIX PERSON-POWER
PEDAL POWERED JUKEBOX

or charge your laptops & phones with your legs. You can
plug in almost anything, in as long as you pedal enough...

ENTER OUR FIRST INTERNATIONAL
HOME-MADE TRAILER BEAUTY CONTEST

CHECK THE BHPC STAND FOR OUR CELEBRITY GUEST STAR ..

**"DAISY" GUY MARTIN'S
RECORD BREAKING TANDEM**

565 miles in 24 hours! As seen on TV!



Special event

All bikes, all cyclists welcome to join an

ALL-COMERS FREESTYLE
TRY-OUT SESSION ON
YORK'S NEW
OLYMPIC

VELODROME

RECUMBENTS
CARGO BIKES
VELOCARS, RICKSHAWS
HANDCYCLES & ALL-ABILITY BIKES

Accompanied ride leaving the Rally 11.15am

SUNDAY 21 JUNE

BHPC will run two 20-
minute races starting at
12:10 and 12:40, open
to all styles of
recumbent cycles. The
first race will be for
slower riders and
multitrack machines,
the second race will be
for faster machines.
Positions will be
awarded to the first
three finishers in each.

**1-2pm: everyone
can have a go!**

TRACK FEE: £5.00
(BHPC MEMBERS FREE)

Art & Sculpture



Homeware & Gifts



Jewellery & Keyrings



Adventure Cycling



Clothing and Accessories



Mugs & Ceramics



Bags, Purses & Wallets



Calling photographers!

One of the many things we can't afford this year is to pay a professional photographer to be at the Rally, taking pictures which we could use for press work, for the website and generally to promote the Rally for future years. So that's where you come in!

If you're at the Rally taking pictures, please send us the best of them and have a chance to win in our photo competition!

We're looking for any positive image of the Rally: happy people enjoying a grand weekend of cycling. Capturing the spirit of the Rally is more important than technical excellence. We need to show people why we love the Rally, and why they should come next year!

Please send your images, at the best available resolution, to publicity@yorkrally.org with 'Photo competition' as the subject line. If the file is too large for email we suggest using the free file transfer service at www.wetransfer.com – just hit 'skip' if it nags you for the paid version. Don't worry about sending big files or plenty of them: we have fast internet and masses of hard disk space! Unfortunately we cannot accept entries as prints or slides.

Closing date for entries is Sunday 5th July 2015 and winners will be announced on or before the 1st August 2015. Prizes will be sent to the winners within two weeks.

Judging will be carried out by the York Rally Committee and will take account of the age of submitters: please mention this with your entry if you feel it is relevant, and to be eligible for the Under 16 prize.

By entering, you are granting the York Rally Committee a non-exclusive license to use your images to promote the York Rally both in print and online. Unless you request otherwise, you will always be credited as the photographer.

First prize: Bridge Street Saddlebag

This is a lightweight, quick release saddlebag made in waterproof nylon. Worth £80, and includes a 'high mount' Klick-Fix seatpost mount. Large size (15 litres), black. Kindly donated by Bridge Street Saddlebags: www.bridgestreet.cc



Second prize: Free camping in 2016!

Free camping at the 2016 York Rally: any single pitch up to a value of £90 (e.g. a motorist pitch and four extra people)

Three runners-up prizes: CycleMiles mugs

These cycling mugs (worth £8.95 each) were kindly donated by CycleMiles: Tel 02392 455 355 or see www.cyclemiles.co.uk



Under 16s prize: a York Rally hoodie.

BELOW: Instead of the Sunday morning ride to York Minster, this year there's a ride out to a church service at Naburn: see page 9. The Minster ride did create some great photo opportunities: this was the 2008 event. Photo: Peter Eland

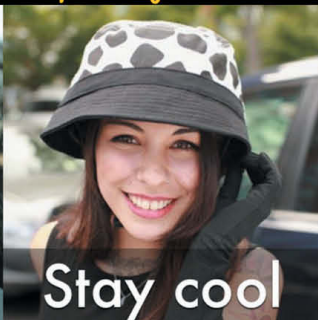


RockiNoggins^{UK}

Contemporary helmet covers



Stay dry



Stay cool



Stay safe

NOW AVAILABLE IN THE UK

RockiNoggins helmet covers come in two sizes and fit the majority of helmets and brands. They help protect you from the sun, rain and wind and all come with a loop to attach a reflector or light to keep you safe on the road.

Keep dry, cool, safe and stylish with RockiNoggins UK.

Visit our website to shop our full range of helmets and accessories. Our covers fit the majority of helmet shapes, sizes and brands.

Helmet covers from £24.95 and accessories from £3.95.



www.rockinoggins.co.uk
hello@rockinoggins.co.uk

Cycle club and charity displays



MAIN IMAGE: Racing at the Rally, but year and photographer are unknown. Does anyone know more?

Our thanks to the following clubs for supporting the Rally with their displays:

British Human Power Club Website: www.bhpc.org.uk

Bygone Bykes (Yorkshire) Club Website: www.bygonebykes.weebly.com E-mail bbcy1967@btinternet.com

National Association of Veteran Cycle Clubs
Tel 01530 833 521 Website: www.navcc.co.uk

National Clarion Cycling Club 1895 Contact Charles Jepson. Tel 01254 51302 E-mail clarioncc@yahoo.co.uk

Northern Counties Veteran and Classic Cycle Club E-mail info@ncvccc.co.uk Website www.ncvccc.co.uk

Tricycle Association Website: www.tricycleassociation.co.uk

RSF Off-road cycling club (Rough Stuff Fellowship) Website: www.rsf.org.uk

In addition, the following charities and volunteer organisations are exhibiting at the Rally:

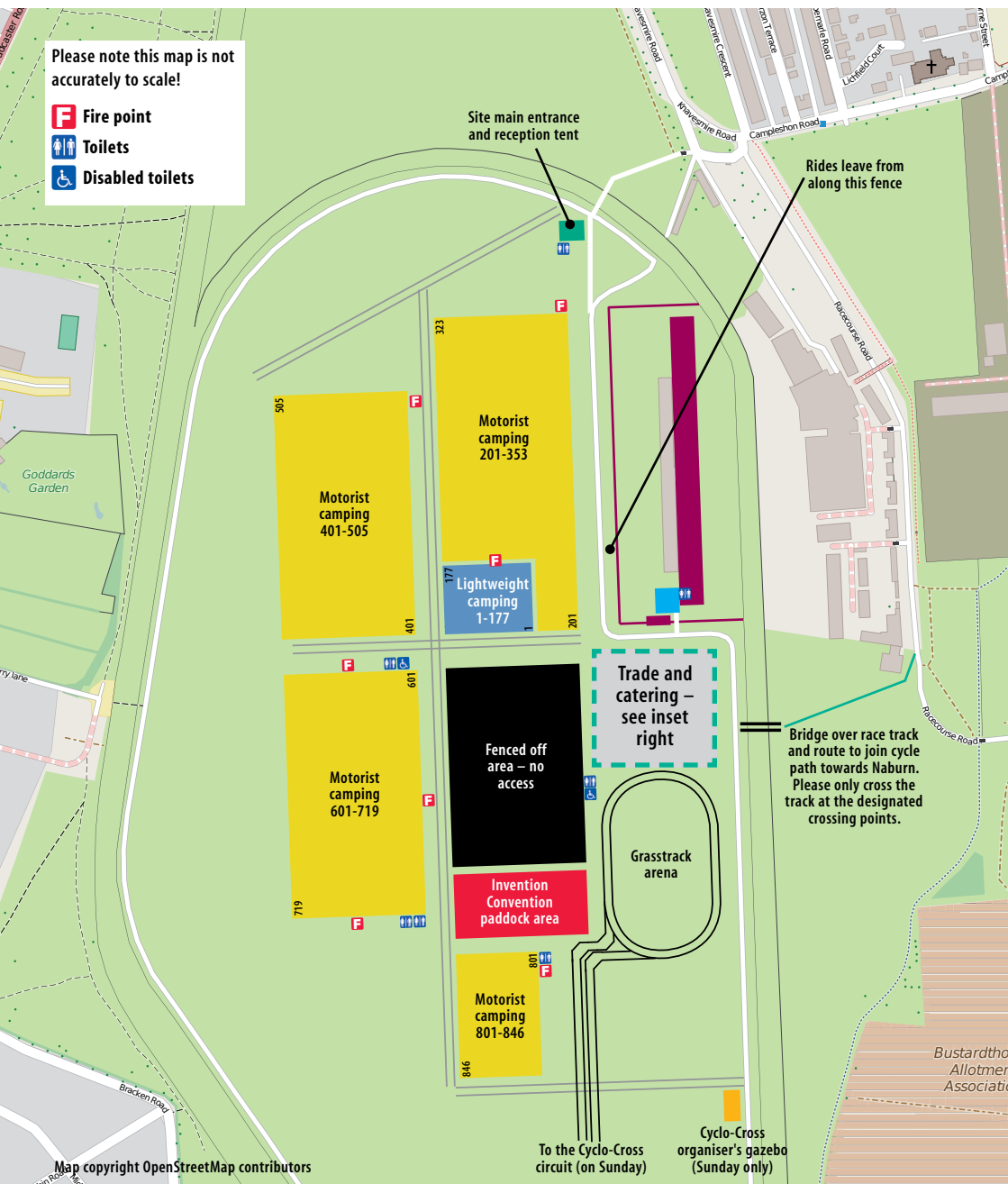
BikeRescue Project The Hub Station, Wellington Row, York YO1 6HY. Tel 01904 733 789 Website: www.bikerescueproject.org.uk

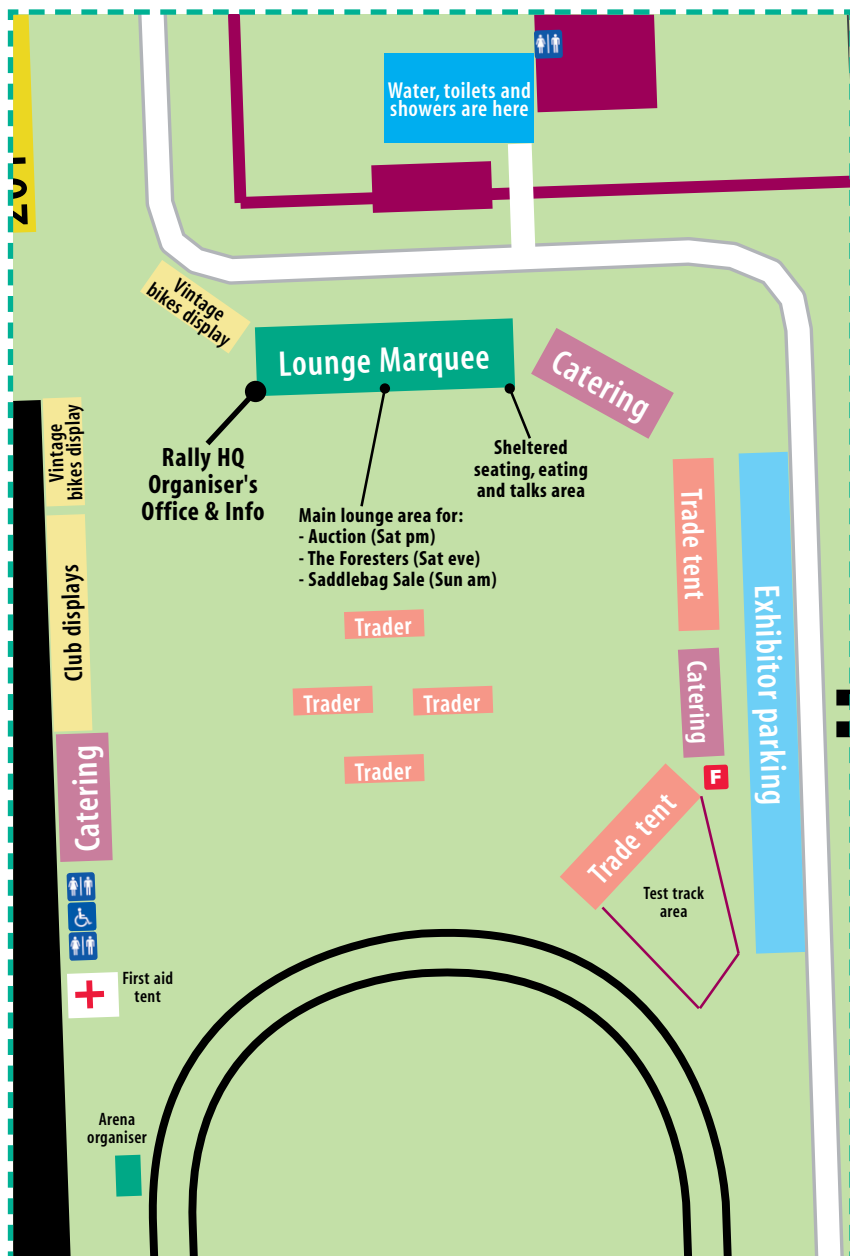
Krizevac Project Tel 01543 888 494 Website: www.krizevac.org



DON'T MISS THE RECORD HPV! As seen on Channel 4's "Speed with Guy Martin" in October last year, this tandem was powered to a new world 24h record by Guy Martin and Jason Miles. It'll be on display at the Rally on the British Human Power Club stand. Many thanks to its owners, EPS in Derby, for the loan, to Hull Cycle Courier www.hullcyclecourier.co.uk for transport, to Alan Goodman for the photos, and of course to the BHPC!

2015 York Rally site plan







**YORK RALLY SPECIAL
10% OFF YOUR
NEXT CLUB KIT ORDER**

**VISIT OUR STAND AND
SEE OUR PRODUCTS**

**NO MINIMUM ORDER
NO SET UP COSTS
FREE DESIGN SERVICE
MADE IN EUROPE
3 - 4 WEEK DELIVERY
FREE CLUB SHOP
HIGH QUALITY
LOW PRICE**

made by cyclists. for cyclists

**0113 2526770
sales@ev2sportswear.co.uk**

List of Exhibitors

Our thanks to the following companies for supporting the Rally with their displays:

Bikefix 48 Lambs Conduit St, London WC1N 3LH. Tel 020 7405 1218
E-mail: sales@bikefix.co.uk Website: www.bikefix.co.uk

Corinne Dennis 8 Tregonhay, Upton Cross, Liskeard PL14 5AZ.
Tel: 07850 429773 E-mail: corinne@corinneedennis.co.uk Website: www.corinneedennis.co.uk

Cyclecentric 37 High St, Longstanton, Cambridge CB24 3BP. Tel: 01954 782020
E-mail: info@cyclecentric.com Website: www.cyclecentric.com and www.airnimal.eu

EV2 Sportswear Unit 20, Howley Park Business Village, Howley Park Close,
Pullan Way, Morley, Leeds LS27 0BZ. Tel: 0113 252 6770 Website: www.ev2sportswear.com

Hewitt Cycles 17-19 Preston Road, Leyland, Lancs PR25 4NT.
Tel: 01772 424773 E-mail: info@hewittcycles.co.uk Website: www.hewittcycles.co.uk

Inspired Cycle Engineering Unit 15 Tregonigie Industrial Estate,
Falmouth TR11 4DH. Tel: 01326 378848 E-mail: sales@icetrikes.co.uk Website: www.icetrikes.co.uk

JD Tandems Asquith Industrial Estate, Gargrave, North Yorkshire BD23 3SE
Tel: 01756748400 E-mail: ruth@tandems.co.uk Website: www.tandems.co.uk

K2 Trading 86 Hykeham Road, Lincoln, Lincolnshire, LN6 8AB. Tel: 01522827349

Margaret Allen Thermals They trade only at events.

Nice Dutch Bike Company c/o Bob's Bikes, 327a Beverley Road, Hull,
HU5 1LD Tel: 01482 443277 E-mail: info@nicedutchbikes.co.uk www.nicedutchbikes.co.uk

Re-Cycle York 41 Huby Court, Walmgate, York YO1 9UD.
Tel: 01904 848141 E-mail: re.cycle.york@gmail.com Website: www.re-cycle.york.co.uk

Spa Cycles 48a Camwal Road Harrogate HG1 4PT.
Tel: 01423 887003 E-mail: sales@spacycles.co.uk Website: www.spacycles.co.uk

The Electric Transport Shop (York) 32 Walmgate, York, YO19 1TJ.
Tel: 01904 623515 E-mail: tetsyork@gmail.com Website: www.electricbikesales.co.uk

Tudor Sports PO Box 10397, Leicester LE8 8WF. Tel: 07710 095 297
E-mail: info@tudorsports.co.uk Website: www.tudorsports.co.uk

Velo Vision Magazine Freshfields, Gayton le Marsh, Alford, Lincolnshire.
LN13 0NS. Tel: 07948 271763 E-mail: howard@velovision.com Website: www.velovision.com

Virk Designs Station House, Naburn, York, YO19 4RW.
Tel: 07447322523 E-mail: info@virkdesigns.co.uk Website: www.virkdesigns.co.uk

Yellow Limited Bury Bank, Stone, Staffordshire ST15 0QA. Tel: 01785 811810
E-mail: info@yellow-limited.com Website: www.yellow-limited.com

Yourspokes and Poetry in Motion Cycles Unit 1 Franklins
Yard, 28a Fossgate, York, YO1 9TA.
Tel: 07917698749 E-mail: dylan@yourspokes.co.uk Website: www.yourspokes.co.uk

In addition, the following organisations are supporting the Rally with advertising in the show programme, but they aren't at the event:

CTC Parklands, Railton Road, Guildford, Surrey GU2 9JX. Tel: 0844 736 8451 E-mail: cycling@ctc.org.uk
Website: www.ctc.org.uk

CycleMiles 9 Queen Anne's Drive, Havant, Hampshire PO9 3PG. Tel: 02392 455 355 E-mail: velo@cyclেমiles.co.uk Website: www.cyclেমiles.co.uk

Jim the Wheel Builder Tel: 07917 076607 E-mail: jim@jimthewheelbuilder.co.uk Website: www.jimthewheelbuilder.co.uk

RockiNoggins UK Gardenstone Cottage, Hutton Rudby, Yarm, Cleveland TS15 0HZ. E-mail: hello@rockinnoggins.co.uk Website: www.rockinnoggins.co.uk

Your Bike Shed 148/150 Micklegate, York YO1 6JX. Tel: 01904 633 777 E-mail: info@yourbikeshed.co.uk Website: www.yourbikeshed.co.uk



RIGHT: A dapper gent at the 2008 Rally. Photo: Peter Eland



tout terrain

The **Urban Range** for commuting and fast riding. Steel frames for strength, hub gears and hydraulic disc brakes for minimal maintenance. All available with Gates Carbon belt drive.

The **Trekking Range** for hard use. Available with the Gates Carbon Drive system and Rohloff or Shimano hub gears or Pinion gearbox, with an integrated tubular steel rack to give a secure mount for your luggage.

The **Expedition Range** uses a high quality multi-buttressed steel frame made of Dedacciai tubing with stainless steel fittings and integrated stainless steel rear rack. For the longest rides and the heaviest loads.

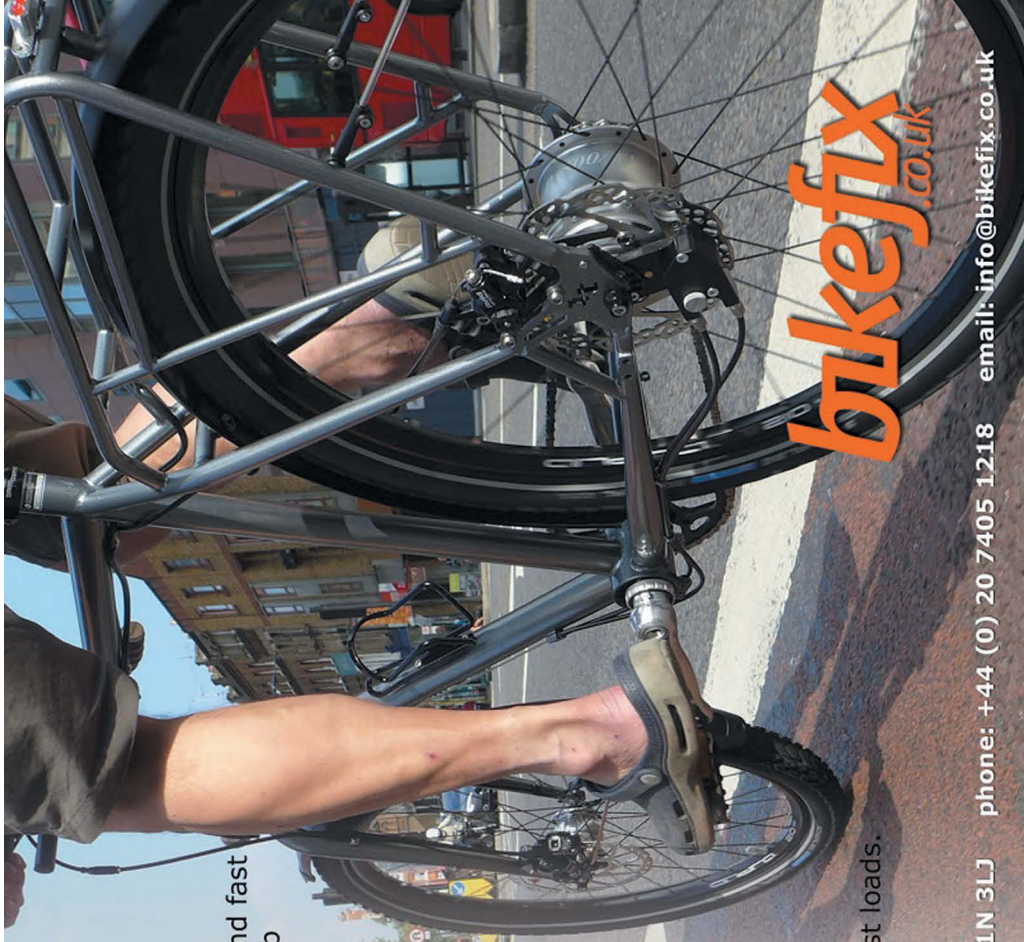
bikefix.co.uk/toutterrain

4/8 Lamb's Conduit Street London WC1N 3LJ

phone: +44 (0) 20 7405 1218

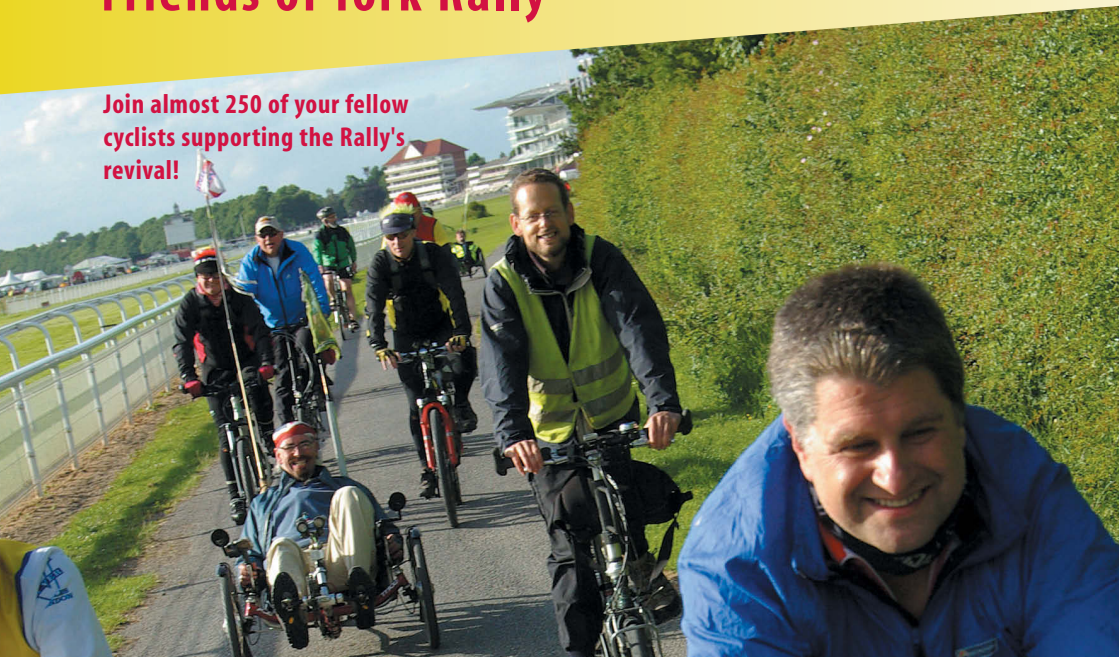
email: info@bikefix.co.uk

bikefix
.co.uk



Friends of York Rally

Join almost 250 of your fellow cyclists supporting the Rally's revival!



Join the *Friends of York Rally*!

We hope you will consider joining the ***Friends of York Rally***, the supporters' club for everyone who wants to see the York Rally return and continue as an annual event. As an independent committee of volunteers starting from scratch, we are very grateful for your support: it helps us enormously as we take on the considerable financial commitment of running the Rally.

The annual ***Friends*** membership fee has been set at £5, but naturally if you are able to contribute more this will be most welcome and much appreciated.

You can join at our Rally HQ or in the Reception tent at the entrance.

Otherwise, please join online, or fill out the form and return it to the address shown.

www.yorkrally.org/friends

Friends of York Rally Form

Name: _____

Address: _____

Phone number: _____

Email address: _____

These details will be used only by the York Rally Committee for Rally purposes and will not be passed to any third party. We would like to use the email address to send you regular updates and news about the Rally. If you would prefer not to receive such messages please tick here: ☐

Annual membership fee: £ 5.00

Additional voluntary contribution: £ _____

Total: £ _____

Signed: _____

Please make cheques payable to
"York Rally" and send to:
**Rachel Thompson, York Rally Treasurer,
32 Scholemoor Road, Bradford BD7 2PD.**

Come Off - Road Cycling with the RSF -
the world's oldest off - road cycling club.

Join us on one of our rides at the York Rally.

Visit our stand in the marquee

Find us at www.rsf.org.uk



Quality bicycles that don't cost the earth

repairs ♦ accessories ♦ training ♦ volunteering
experts in vintage and veteran bikes



Where there's a wheel, there's a way...

Exciting new courses: *something for everyone*

Walmgate Warehouse and Training
Centre, The Enterprise Complex,
Walmgate, York, YO1 9TT.

Call for more information: 01904 630400

- Velotech mechanical training
- Open Awards basic to advanced
Modular qualifications

Tailored courses: *what suits you best?*

- Family and friends sessions
- Roadside repair essentials
- Training gift vouchers for one to one
- School holiday activities
- Get to know your own bike

Visit us:

The Hub Station, Wellington Row
York, YO1 6BE. 01904 733789

www.bikerescueproject.org.uk

www.facebook.com/yorkbikerescue

admin@bikerescueproject.org.uk

1500

bikes recycled
every year!
600 bikes donated
to support an
orphanage in
Ghana

Rally tops and badges



York Rally clothing

To help with the fundraising effort we have produced a range of attractive York Rally clothing. All have our embroidered logo on the front (except for the T-shirts, which have a printed logo).

On offer are T-shirts, polo shirts, hoodies, sweatshirts or full zip fleeces. All are available in grey, black and royal blue.

Visit the Rally HQ in the Lounge tent to view some samples. There you can order clothing for delivery by post after the event, or take away a paper order form. You can also order online using the link below.

Every time you wear one of these tops, you're also helping us promote the event: thank you in advance!



The 2015 York Rally badge

The lovely design of this year's badge was (as is the case for just about everything to do with the Rally) produced by a volunteer. We're delighted with the end result, and we hope you will be too.

You can purchase a badge from our Rally HQ in the Lounge marquee, or after the event online or by post while stocks last.

We know that many Rally regulars have extensive collections of these badges, some extending right back to the event's foundation in the 1940s. We're delighted to be able to continue this grand tradition.

We're also having badges made for the ***Friends of York Rally*** (see previous page), so join up to get one of those, too!

www.yorkrally.org/merchandise

**Your
Bike
Shed**

RELAX-REPAIR-REFUEL



**ULTIMATE CUP
OF COFFEE**





**WORKSHOP
SERVICES**



**CAKE, COFFEE AND
ALL THINGS NICE**

tel. 01904 633 777 **email.** info@yourbikeshed.co.uk

address. 148/150 Micklegate York YO1 6JX

 [@yourbikeshed](https://twitter.com/yourbikeshed)  Your Bike Shed

WWW.YOURBIKESHED.CO.UK



YORK CYCLE RALLY

SPORTIVE

Join us on **Sunday**
20th September 2015

Following our successful first event in 2014, cyclists are again invited to join the York Rally Sportive in September 2015! There are three rides into the spectacular Yorkshire countryside, each supported with marshalls, sag and broom wagons and refreshment stops with legendary cake. All funds raised go to supporting the annual volunteer-organised York Rally.

Grande Classic: 140 km (87 miles)

Taking you to the heart of the North York Moors, this will be a rewarding challenge for seasoned riders, including the remarkably steep Rosedale Chimney Bank (an optional bypass route is available).

Classic: 100 km (62 miles)

Includes challenging climbs, leading to spectacular views in Farndale and around Hutton-le-Hole.

Petit Classic: 36 km (22 miles)

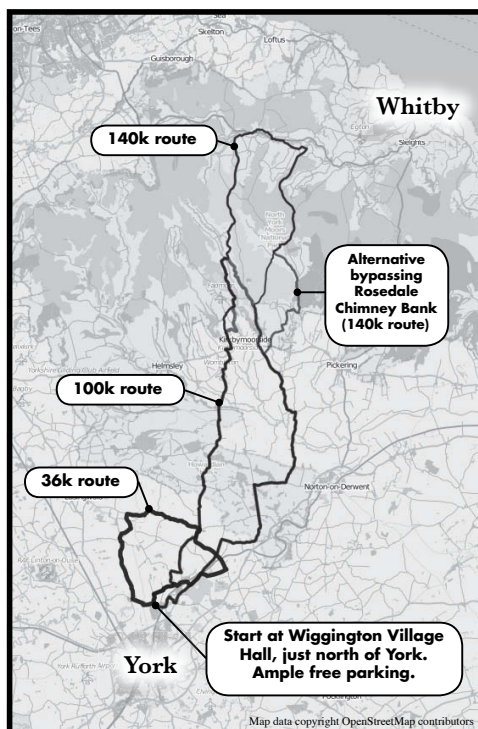
A flat, well-signed route ideal for families or anyone wanting a gentle ride.

Zoomable route maps, GPX downloads and online entry details are all at:

www.yorkrally.org/sportive

or call organiser Paul Reid on:

016973 43089 or 07467 321443



York Rally Sportive Entry Form

Name: _____

Address: _____

Phone number
(ideally mobile): _____

Email address: _____

I would like to enter:

- ☐ The 36k ride: £11
- ☐ The 100k ride: £21
- ☐ The 140k ride: £21

Signed: _____

Please make cheques payable to "York Rally" and send to: **Paul Reid, Ceardach, Brackenthwaite, Wigton, Cumbria CA7 8AS.**

Entry forms are also available at Rally HQ in the Lounge tent and at the Reception tent at the site entrance!



SCAN TO ENTER ONLINE

Entries must be received by the 12th September 2015!

GO ANYWHERE



Performance recumbent trikes
01326 378848 sales@icetrikes.co

www.icetrikes.co

ICE

How the Rally began



York Rally 1953
Una would be 12 yrs old 13th Nov
Kathleen was 5 yrs old 11th Nov
in 1953
They rode from Sheffield
to York Rally accompanied
by Jack & I - We won the
family award 1953 & 1954
Camping award 1955.

LEFT AND ABOVE: Una and Kathleen Riley came to the York Rally by tandem tricycle in 1953. Photo courtesy of Martin Purser of the Tricycle Association.

This year, 2015, it is 70 years since the first Rally was held on the Knavesmire.

The idea of a cycle rally originated from an idea from the Hull and East Riding District Association at a meeting of the District Association committee on 18th December 1944. C.A.Pratt raised the possibility of organising an annual inter-DA meet with the object of encouraging closer collaboration between neighbouring DAs. This led to a meeting held in York on 18th March 1945 when the Yorkshire Inter-DA Committee came into being.

Those attending the meeting were:

Mid-Yorkshire DA:

Mrs L.Bennett, R.G.M.Carmichael-Riddell, A.Fox, W.Firth.

Sheffield DA: Mrs J.Brufton, E.Gill, H.Lancaster, K.E.Stainton.

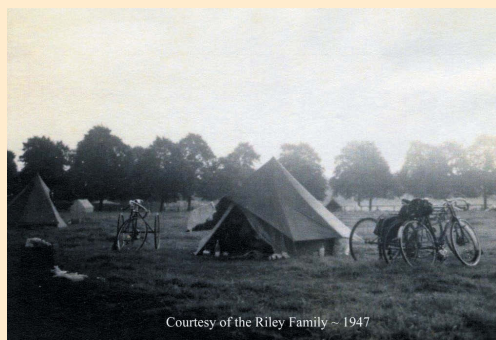
Teeside DA: L.Dawson, G.Jeffcote, F.Rowntree, G.Claxton-Smith.

Hull & East Riding DA: Mr & Mrs C.A.Pratt, H.E.Harland, G.E.Munson.

A simple decision was made to hold a rally "in or near York" in July 1945. Each DA was asked to donate ten shillings towards initial expenses. The title of the event would be "The Grand All-Yorkshire Cyclists Rally".

Right from the never-to-be-forgotten Sunday in September 1945 when the very first York Rally was held on the beautiful Knavesmire, the event proved to have tremendous appeal. And it was repeated for 68 years until its demise in 2013.

Dave Bishop



Courtesy of the Riley Family ~ 1947

ABOVE: Camping on the Knavesmire in 1947. Photo courtesy of Martin Purser of the Tricycle Association.

These images are the oldest we have from the York Rally. We'd love to see your early photos too – please scan them if you can, and send them in by email to publicity@yorkrally.org or just bring them along to one of our meetings.

CTC



JOIN TODAY
FOR 3 MONTHS EXTRA FREE

LOOKING AFTER CYCLISTS SINCE 1878

FROM WINNING THE RIGHT FOR CYCLISTS TO USE THE ROADS IN 1888, CTC CONTINUES TO LOOK AFTER TODAY'S CYCLISTS; ENSURING COUNCILS FIX 1000S OF POTHOLES, FIGHTING FOR CYCLISTS' RIGHTS IN THE COURTS AND SHAPING GOVERNMENT POLICY.

WE COULDN'T DO THIS WITHOUT OUR MEMBERS.

MEMBERSHIP FROM £27 GIVES YOU...

- CAMPAIGNING FOR CYCLING
- £10M THIRD PARTY INSURANCE INC SPORTIVES & OVERSEAS
- DISCOUNTS AT 100s OF CYCLE SHOPS
- 1000s OF RIDES AND EVENTS
- CYCLING RELATED LEGAL CLAIMS ADVICE
- BI-MONTHLY MAGAZINE

JOIN AND SUPPORT CTC AT WWW.CTC.ORG.UK/JOIN
OR CALL 0844 736 8451* QUOTING YR2015

WWW.CTC.ORG.UK

* 0844 NUMBERS ARE 'BASIC RATE', COSTING UNDER 5P/MIN PLUS YOUR PHONE COMPANY'S ACCESS CHARGE ON A BT LANDLINE. OTHER PROVIDERS MAY CHARGE MORE.

CYCLISTS' TOURING CLUB (CTC) A COMPANY LIMITED BY GUARANTEE, REGISTERED IN ENGLAND NO: 25185,
REGISTERED AS A CHARITY IN ENGLAND AND WALES CHARITY NO: 1147607 AND IN SCOTLAND CHARITY NO: SC042541. REGISTERED OFFICE: PARKLANDS, RAILTON ROAD, GUILDFORD, GU2 9JX.

reCycle ork

Bikes from £40

Parts & Accessories

Fixed Price Repairs



Over £40 of freebies with these bikes



1 Hour Puncture Repair Service - from £7.50

Everything Cycling - Honest Advice

Since we started trading in August 2011 we have supplied nearly three thousand bikes to happy customers & offset over 350 metric tons of carbon emissions

10% off anything with this advert

41 Huby Court : Walmgate : YORK : YO1 9UD

www.re-cycleyork.co.uk

Tel 848141

Local info

Rally contact numbers

**York Rally mobile:
0746 732 1443**

This number will be manned 24 hours throughout the Rally. For all non-emergency enquiries.

First Aid & Emergency:
0746 732 1440

On-site emergency number, manned 24 hours throughout the Rally.

Sat: 8am to 9pm. Sun: 10am to 4pm. See map. Follow the arrow for another.

Filling gas cylinders: There are several York area Calor Gas stockists but the closest is probably Morrisons supermarket petrol station on Foss Islands Road, YO31 7UL. Open 6am-10:30 Fri, Sat; 8am-8pm Sun.

Vets: Tower Vets have a surgery nearby (YO23 1NZ, see map) but it's only open 8:30-11am on Sat. Other branches in York open until 12 on Saturdays. Closed Sunday. Phone 01904 653961 or see www.towervets.co.uk

Useful numbers

Police Emergency: 999

Non-emergency police: 101

NHS advice service: 111

York Hospital: 01904 631313

Samaritans: 08457 90 90 90

Local services

Pharmacies: The one with longest opening hours is at

Tesco Extra, Y024 1LW: open

Local cycling contacts

Cycle shops: Too many to mention in York but the closest are probably:

- **Cycle Heaven** on Bishopthorpe Road (they also have a branch at the train station). Tel 01904 636 578, www.cycleheaven.co.uk
- **Get Cycling** are also close by on Hospital Fields Road (across the Millennium Bridge): Tel 01904 636 812. Specialists in all abilities cycling. www.getcycling.org.uk
- For recycled bikes (or to donate a bike) visit **Bikerescue** at the Rally or at the Hub Station in Wellington Row (by Lendal Bridge): Tel 01904 733789 or see www.bikerescueproject.org.uk

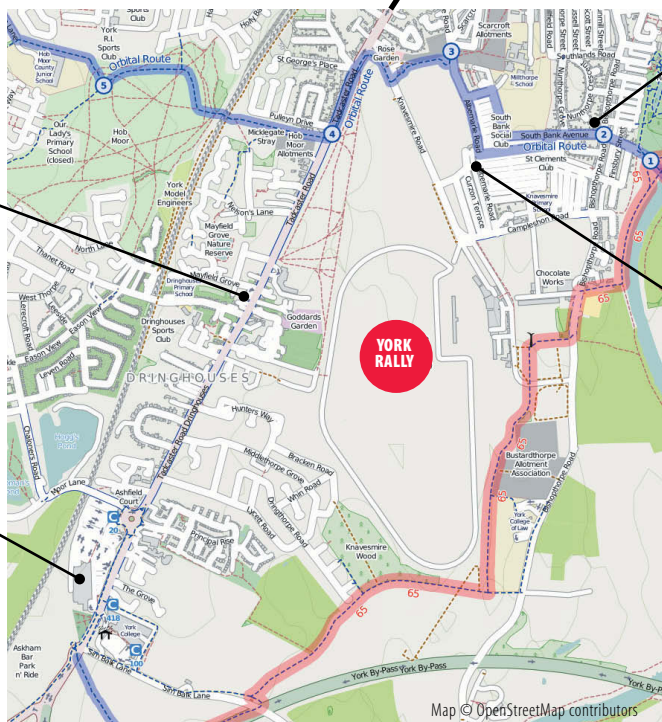
Cycling cafes: We can recommend a visit to **York Bike Shed** (where we've been holding our Rally meetings) just inside Micklegate Bar or to **Bicis y mas** on Walmgate.

Follow Tadcaster Road into town and there's a Sainsbury's local supermarket on your left just before the cinema, with a cash point outside. There's also a pharmacy just across the road from Sainsbury's. The train station is in this direction too.

Blue track is York's orbital cycle route.

Co-operative petrol
station, Tadcaster Rd.

Tesco Extra supermarket with pharmacy, petrol station and cash points. By car, approach from roundabout on Tadcaster Road. By bike you can also use the pedestrian ramp opposite York College, making the ride from the Rally (via Route 65) entirely off road.



Tower Vets South
Bank surgery.

Red track is Sustrans
NCN Route 65 towards
city centre.

The Millennium Bridge

Knavesmire shops: The corner shop opens late and will be the closest place to get milk etc. There's also a baker, butcher, (both open Sat only) and a fish & chip/pizza/kebab shop (open 4:30 - 9:30 pm Sat & Sun) and a pub.

Red track is NCN Route 65
towards Naburn and Selby



YOURSPOKES

*One of the UK's leading
custom wheel building and
spoke supply companies*

WHY CUSTOM BUILT WHEELS?

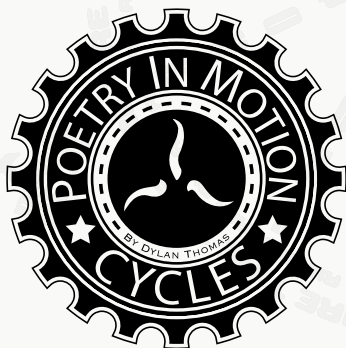
- » Wheels that suit you and your bike.
- » Wheels that suit the riding conditions of the roads you cycle.
- » Wheels that are stronger and more stable than a factory built wheel.

POETRY IN MOTION

*York's only custom frame
builder and restorer*

SERVICES INCLUDE:

Frame building
Frame repairs
Frame modifications
Chroming, re-chroming & resprays
Bike restoration
Bike building



CONTACT: DYLAN THOMAS

Address: Unit 1 Franklins Yard, 28a Fossgate, York, YO1 9TA.

Tel: 07917 698 749

Web: www.yourspokes.co.uk

Email: dylan@yourspokes.co.uk

www.pimcycles.co.uk

cervélo**EDDY MERCKX****ENIGMA**
BICYCLE WORKS**KINESISUK****SHIMANO****STORCK**
BICYCLE**LOOK****boardman**
performance design quality*campagnolo***MAVIC****CECPO****COLNAGO****RIDLEY****ORBEA**
*Van Nicholas***SAE****SURLY**

Precisely Fitted - Precisely Built

Free bike fitting with
every frame / bike order

Hewitt Alpine

Road CC Touring / Audax Bike
of the Year.

road.cc
pedal powered

Prices from £1599.00



Hewitt Cheviot SE

CYCLING PLUS

Cycling Plus
Distance Bike
of the Year.

Prices from
£1599.00



Hewitt Cheviot

CYCLING PLUS

Cycling Plus
Distance Bike
of the Year.

British Bicycle Awards
Distance bike of the Year.

Prices from £1299.00



17-19 Preston Road, Leyland,
Lancashire, PR25 4NT
Telephone: 01772 424773
Email: info@hewittcycles.co.uk
www.hewittcycles.co.uk

Hewitt
The Specialists
www.hewittcycles.co.uk